



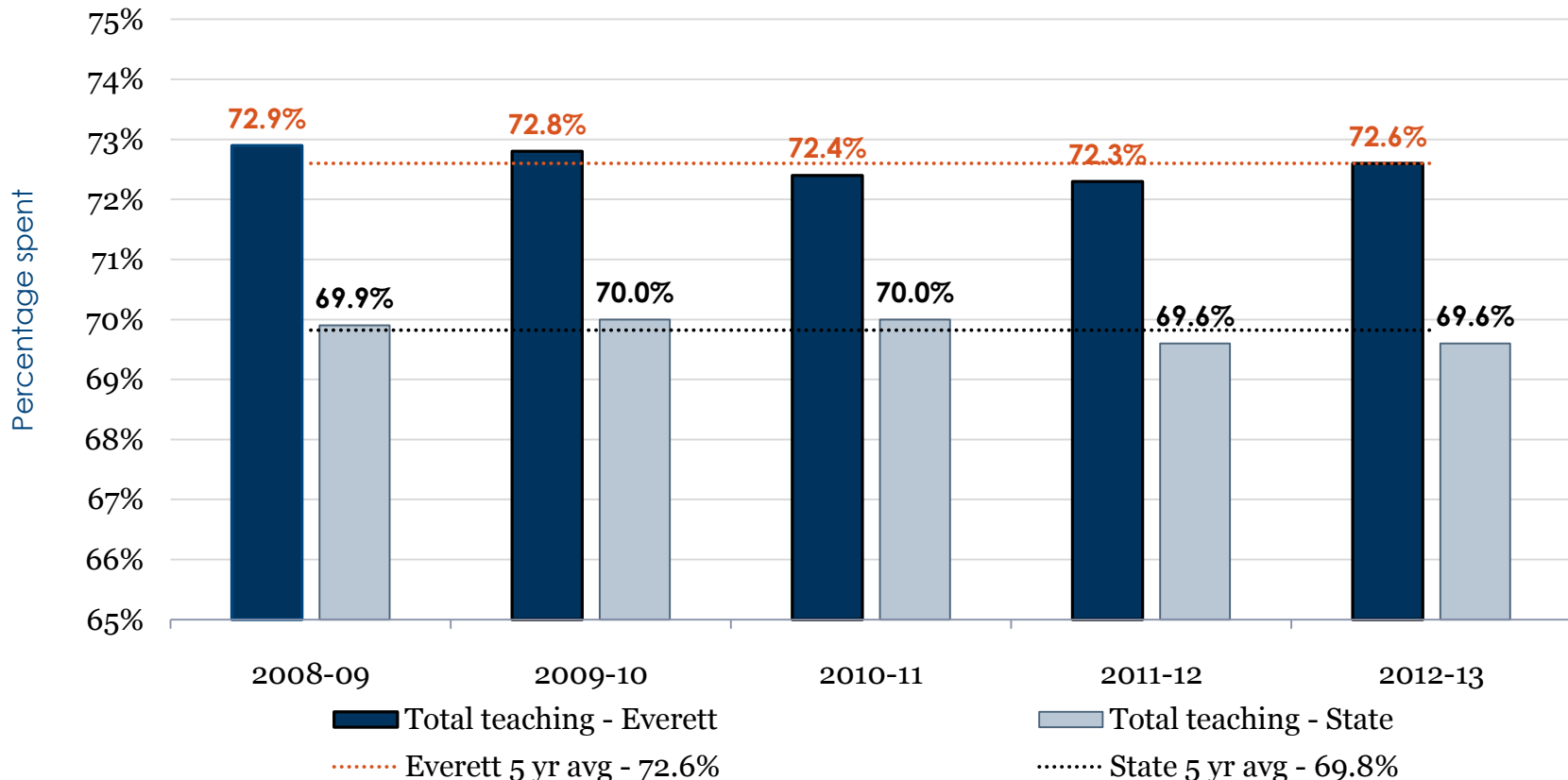
## Everett, State, and Large Districts Five Years of Comparisons

Area of comparison	5 yr AVG	2012-13	2011-12	2010-11	2009-10	2008-09
<b>Total teaching</b>						
Everett	72.9%	72.6%	72.3%	72.4%	72.8%	72.9%
State	69.9%	69.6%	69.6%	70.0%	70.0%	69.9%
District	71.2%	71.0%	71.0%	71.0%	71.1%	71.2%
<b>Teaching support</b>						
Everett	12.8%	13.4%	13.3%	12.4%	11.8%	12.8%
State	8.6%	10.7%	10.3%	8.5%	8.6%	8.6%
District	9.2%	11.5%	11.1%	9.2%	9.3%	9.2%
<b>Special education</b>						
Everett	10.6%	11.9%	12.0%	10.8%	10.4%	10.6%
State	12.0%	12.7%	12.5%	11.9%	11.5%	12.0%
District	12.6%	13.3%	13.2%	12.4%	12.2%	12.6%
<b>Total administration</b>						
Everett	11.9%	11.9%	11.6%	11.7%	11.8%	11.9%
State	12.7%	12.4%	12.3%	12.2%	12.4%	12.7%
District	12.0%	11.7%	11.7%	11.6%	11.8%	12.0%
<b>District-wide support</b>						
Everett	12.2%	11.6%	12.1%	12.1%	12.2%	12.2%
State	13.8%	14.1%	14.2%	13.8%	13.8%	13.8%
District	13.1%	13.0%	13.2%	13.2%	13.2%	13.1%
<b>Maintenance and operations</b>						
Everett	7.1%	6.4%	7.0%	7.2%	6.8%	7.1%
State	8.3%	8.2%	8.3%	8.2%	8.3%	8.3%
District	7.9%	7.6%	7.8%	7.9%	7.9%	7.9%

# State-wide comparison

## Five year summary: Total teaching 2009 to 2013

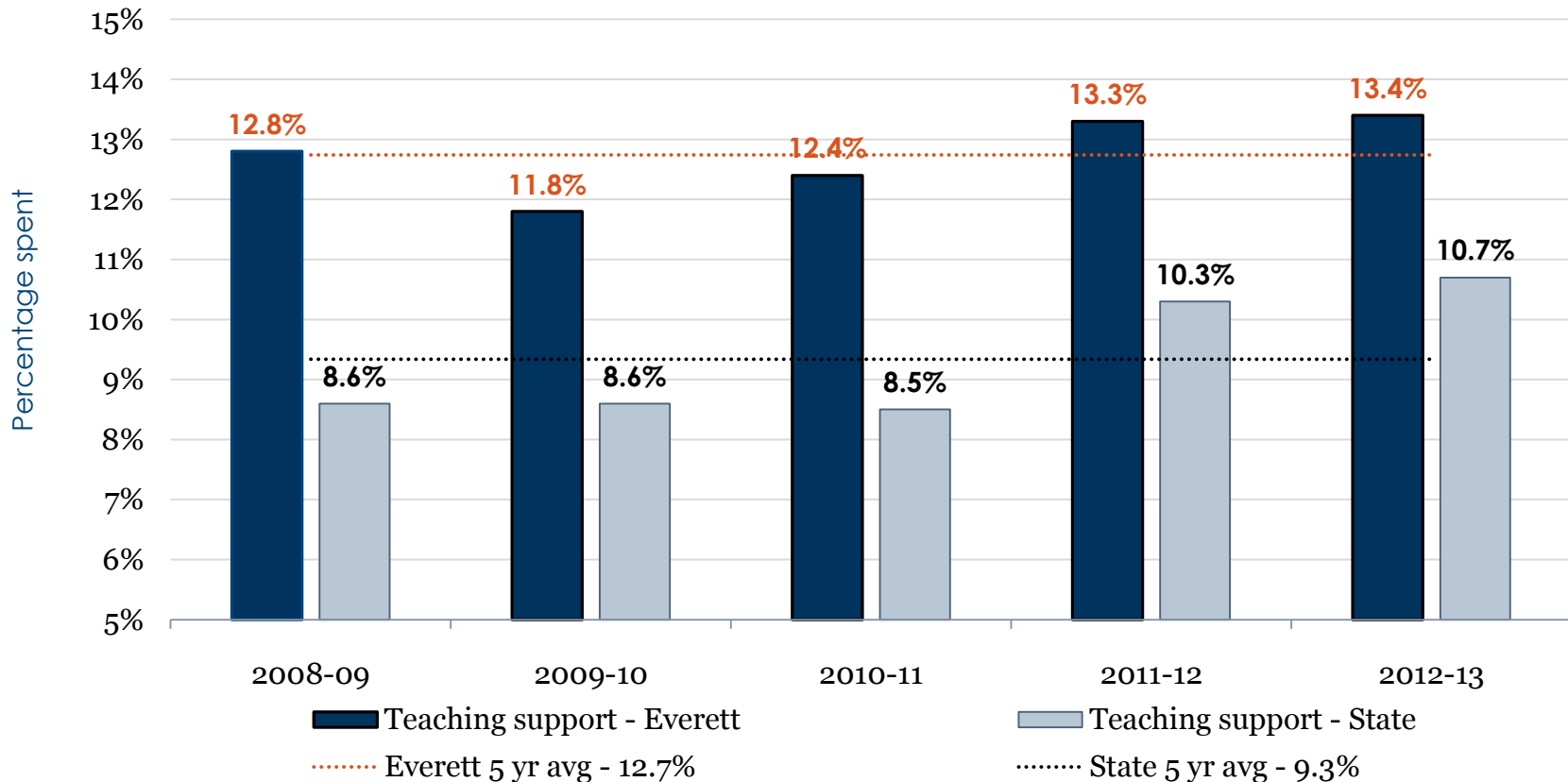
*Teaching, teaching support, special education, total administration, district-wide support, maintenance and operations*



# State-wide comparison

## Five year summary: Teaching support 2009 to 2013

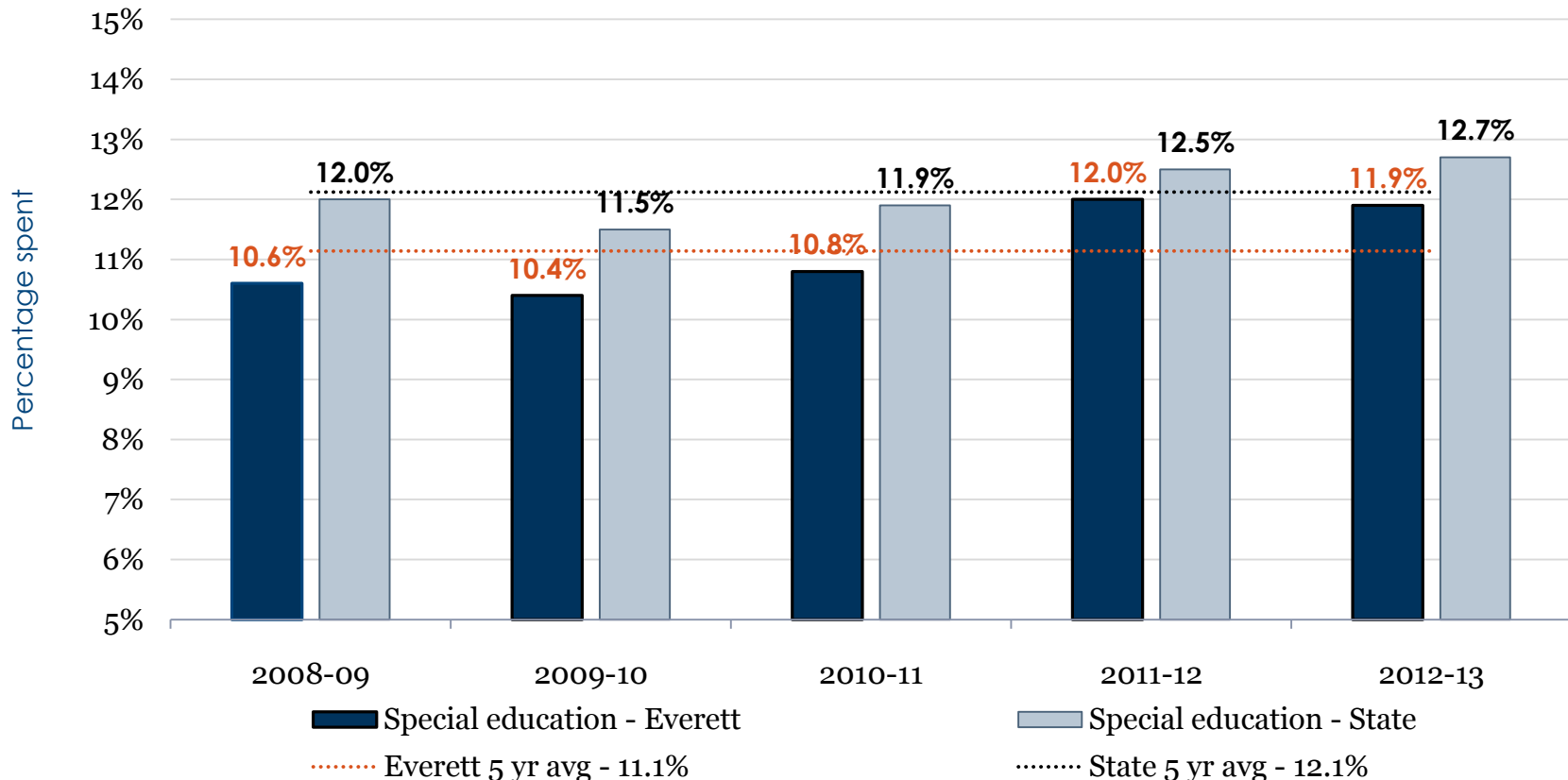
*Librarians, counseling, student security, recess supervision, psychologists, speech, and health services*



# State-wide comparison

## Five year summary: Special education 2009 to 2013

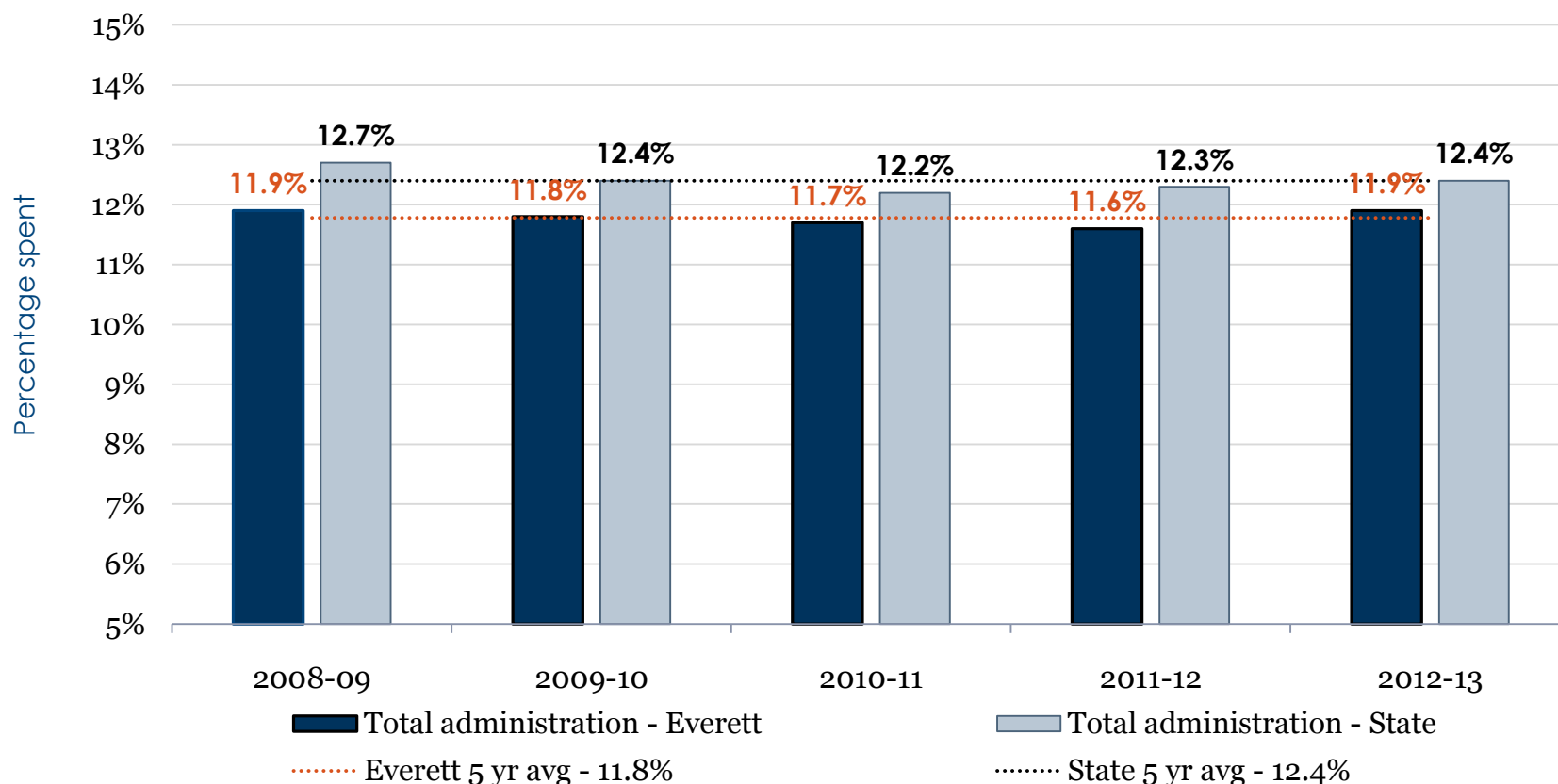
*Staffing including teachers, para educators, psychologists, nurses, speech and language pathologists, occupational and physical therapists, administrative staff, services, equipment, and materials*



# State-wide comparison

## Five year summary: Total administration 2009 to 2013

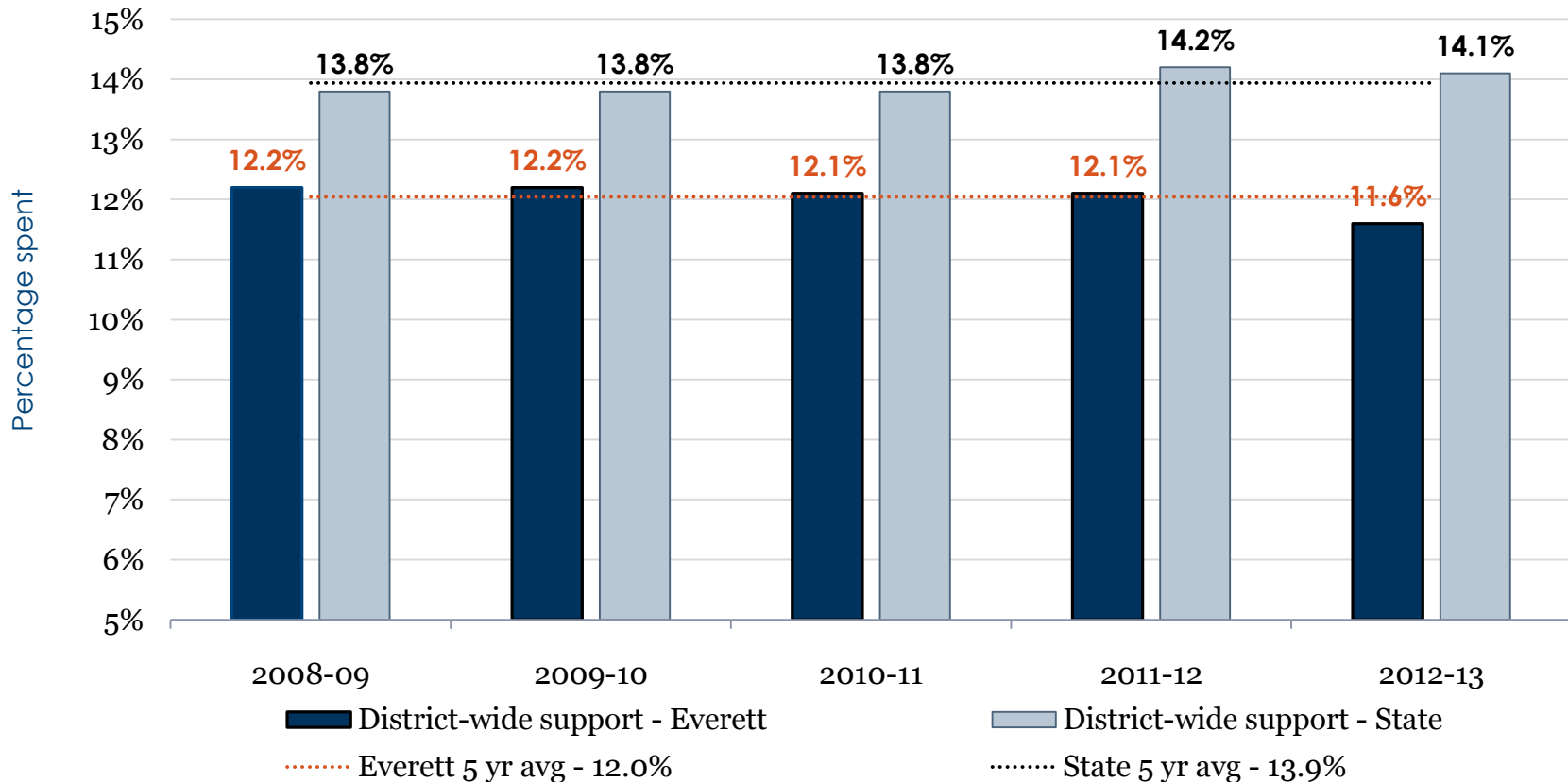
*School and district administrators, technical and clerical staff, and their supplies and materials*



# State-wide comparison

## Five year summary: District-wide support 2009 to 2013

*School board, superintendent, human resources, finance, information systems, communications, and maintenance*



# State-wide comparison

## Five year summary: Maintenance & operations 2009 to 2013

*Maintenance of schools and grounds, school custodians, utilities, and school security*

